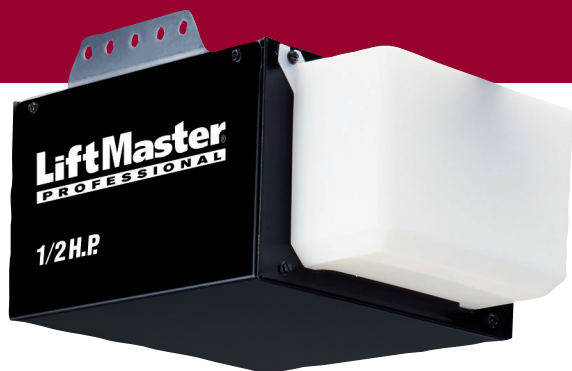


1355 / 1356

1/2 HP CHAIN DRIVE GARAGE DOOR OPENER



Basic Reliability

Performance

- **P3™ Motors** from LiftMaster® are reliable, durable and powerful – designed specifically for your needs.
- **1/2 HP motor** with industrial-strength chain drive provides steady performance and lifting power.
- **75-watt lighting** with adjustable light time delay for more energy-efficient use.
- **4-year motor** warranty and 1-year parts warranty.

Safety and Security

- **Security+®** safeguards your household – with every click a new code is sent to the garage door opener so that the door opens only for you.
- **PosiLock®** locks down your door by electronically monitoring against a forced opening.
- **The Protector System®** has safety sensors that project a light beam across the garage door opening, automatically reversing the door if anything interrupts the beam.

Included Accessories:



1-Button Remote Control (371LM)

Allows you to control a single garage door opener, gate operator or your garage door opener lights and with Security+ rolling code technology, you are assured of a new code with every use.



Lighted Door Control Button (75LM)

Enables you to operate your door from inside the garage.

Optional Accessories:



Wireless Keyless Entry (877MAX)

Open your garage door without using a remote control and close it with just the push of a button. You can also program a temporary entry code for friends and service people.



Mini 3-Button Remote Control (890MAX)

Allows you to operate up to three garage door openers, gate operators or MyQ® Accessories. Fits on keychain, in a pocket or purse.



MyQ Control Panel (888LM)

Allows any LiftMaster Garage Door Opener manufactured since 1998 to be controlled by your smartphone, tablet or computer (when paired with the LiftMaster Internet Gateway) – provides the upgrade needed to utilize Security+ 2.0™ and MyQ Technology.



Ceiling Mount (195LM)

Give your garage the style it's been missing by hiding the wires and cords with this sleek ceiling mount. Works in most standard garages.

1355 / 1356

1/2 HP CHAIN DRIVE GARAGE DOOR OPENER

SPEC SHEET

STANDARD SPECIFICATIONS

DIMENSIONS

Installed Length: 124"
Maximum Door Opening: 7' 6"
Headroom Clearance Required: 2"
*Up to 10' with optional 8' or 10' rails

CARTONS

Number of Cartons: 2
Carton 1: Dimensions and Contents:
- 20" x 12" x 10"
- Lighted Door Control Button
- 371LM Remote Control
- Garage Door Opener Head
- The Protector System®
Carton 2: Dimensions and Contents:
- 10' 4" x 5" x 5"
- Assembled Solid-Steel T-Rail

SECURITY+® RADIO CONTROLS

Coding System: Smart Receiver Code Button and Indicator Light
Operating Range: 150' (approximately)
Operating Temperature: -40°F to 150°F
Battery (remote control): 3-Volt
Frequency: 315MHz
371LM Standard Remote Control
Security+ Anti-Burglary Coding

CONVENIENCE / SAFETY

The Protector System®
Emergency/Quick Release
Automatic Trolley Reconnect
Ventilation/Pet Opening
Down Safety Reverse
Up Safety Stop
Door Open/Beam Broken/Lights On
PosiLock®

ELECTRICAL SPECIFICATIONS

POWER

Voltage: 120V AC, 60Hz;
Wattage: 540
Current Rating: 4.5
UL Listings: Yes
Length of Line Cord: 4' (3-prong)

LOGIC TYPE

Solid-State Microcontroller with Built-in Surge Suppressor

LIGHTING

Number of Bulbs: 1
Maximum Wattage: 75
Length of Light Delay: 4 1/2 Minutes
Type of Light Delay: Solid-State

MECHANICAL SPECIFICATIONS

MOTOR

Horsepower: 1/2
RPM: 1,625
Thermal Protection: Automatic
Lubrication: Permanent

DRIVE MECHANISM

Drive Means: Full Chain
Reduction Means: Gear 16:1
Door Linkage: Adjustable Door Arm

ADJUSTMENTS

Force: Independent External Up and Down
Limit: External

TRAVEL RATE

Approximately 7"/Second

SHIPPING WEIGHTS

Head: 22 lbs.
Rail: Full Chain—20 lbs.

MATERIALS

Chassis: Steel
Rail: Solid-Steel T
Trolley: Steel

WARRANTY

4 Year Motor Warranty
1 Year Parts Warranty

HOMELINK® Compatible (version 4.0 or higher)
w/QuickTrain™ Technology*

*May require an external adapter depending on the model and year of your vehicle.
Visit homelink.com for additional information.