

POWERHOUSE™ XL

HIGH PERFORMANCE RUBBER DOOR

The Worlds' First Maintenance-Free Rubber Door

Rytec's new Powerhouse XL delivers the lowest total cost of ownership of any rubber door ever built. Designed without conventional torsion springs or wear parts, the Powerhouse XL door is practically maintenance-free. The powerful Dual-Sync™ technology operates the door at speeds never before imagined. The engineered styrene butadiene rubber (SBR) panel and heavy-duty construction are virtually indestructible.

Patent-pending innovations and state-of-the-art technologies are built to handle the rigors of heavy industry. It is ideal for the mining industry, waste management, mass transit, manufacturing plants or other large equipment applications where uptime is mission critical. The Powerhouse XL delivers the power, performance and dependability to meet the demands of the world's most extreme environments.

Lowest Total Cost of Ownership – Compared to conventional rubber doors, the exclusive Rytec design saves owners tens of thousands of dollars over the lifetime of the door.

Springless By Design – Specifically engineered to eliminate the high costs of maintaining and servicing torsion springs and counterbalance systems—no dangerous spring repairs or costly replacements.

Minimal Maintenance - Without springs, straps, coil cords or conventional wear parts, simple preventative maintenance keeps it moving day in, day out, cycle after cycle.

Industrial Strength - Stronger, tougher and more durable than conventional rubber doors, the patented reinforced structure increases stability and wind capacity.

Smooth and Powerful – The exclusive Dual-Sync™ technology performs flawlessly on any size door.

Responsive to High Wind Loads- Responds dynamically to high pressure and wind loads by increasing resistance.



POWERHOUSE™ XL

HIGH PERFORMANCE RUBBER DOOR

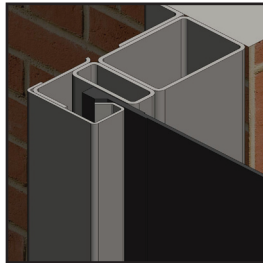
Revolutionary Dual-Sync™ Technology



- Exclusive Rytec innovation.
- Synchronized motors.
- Less stress for longer life.
- Integrated brake/catching device.

High Wind and Pressure Resistant

- Impact-resistant, self-supporting side columns made of structural steel with “Z” mounting bracket.
- Ry-Tension™ system for 30% stronger “dynamic grip” of rubber panel.



Windlock helps door provide additional wind resistance

Durable Industrial-Grade SBR Rubber Panel



Semi-reflective vertical strips for added safety

- 1/4” thick SBR panel is puncture and rip resistant with a tensile strength of 2550 psi.
- Puncture & rip resistant panel is tough and resilient, even at low temperatures (-40°F - 180°).
- Larger SBR door panels include end-to-end butt seams for added strength and stability.

Next Generation Digital Door Controller

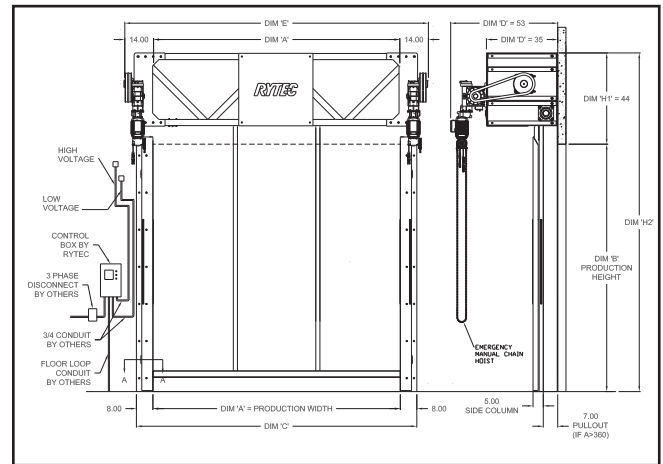
- Programmable Logic Controller (PLC) with a fully integrated interface on the face of the control box for ease of troubleshooting.
- On-board programmable inputs and outputs for remote controls, traffic signals, and security access systems.
- System 4™ Controller available on smaller door sizes.



PLC Controller allows for fully customizable configurations for every application

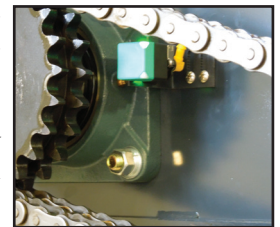
Options & Accessories

- Activators
- Windows
- Hoods
- Colors



Exclusive Rytec Self-Monitoring Technology

- Ry-Wi Wireless monitors door position and eliminates coil cords.
- Chain-Link™ proximity sensors monitor heavy duty chain to enhance safety and reduce maintenance.



Chain-Link™ monitoring system

Advanced Safety Features



Pathwatch™ warning lights give a visual indicator to door movement.

- Pathwatch™ threshold warning lights.
- Front and rear photoeyes.
- Electric reversing edge reverses upon contact.
- Dual-Sync™ ensures safer installation and maintenance.

Warranty

- Lifetime limited warranty on SBR panel material.
- One-year limited warranty on materials and workmanship.



888-GO-RYTEC RytecDoors.com
Tel 262-677-9046 Fax 262-677-2058
One Cedar Parkway, Jackson, WI 53037-0403